

PERCENTAGEM DE OXIGÉNIO DISSOLVIDO NA ÁGUA DE CULTIVO AFECTA BRÂNQUIAS DE DOURADA



Sparus aurata



316,3 ± 1,7 g
Densidade: 10 kg.m⁻³



6 semanas



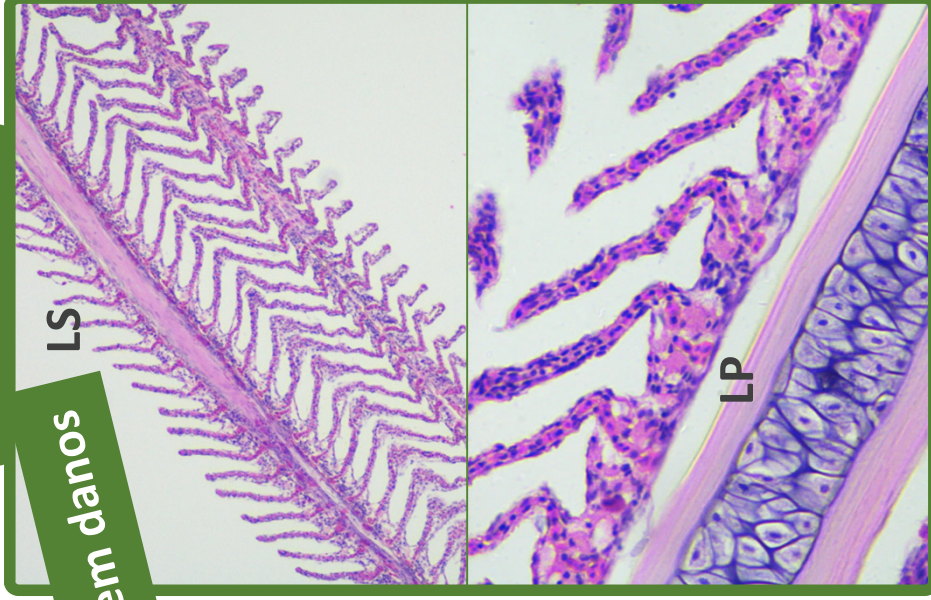
26 ± 0,8 °C



AQUATRANSFER

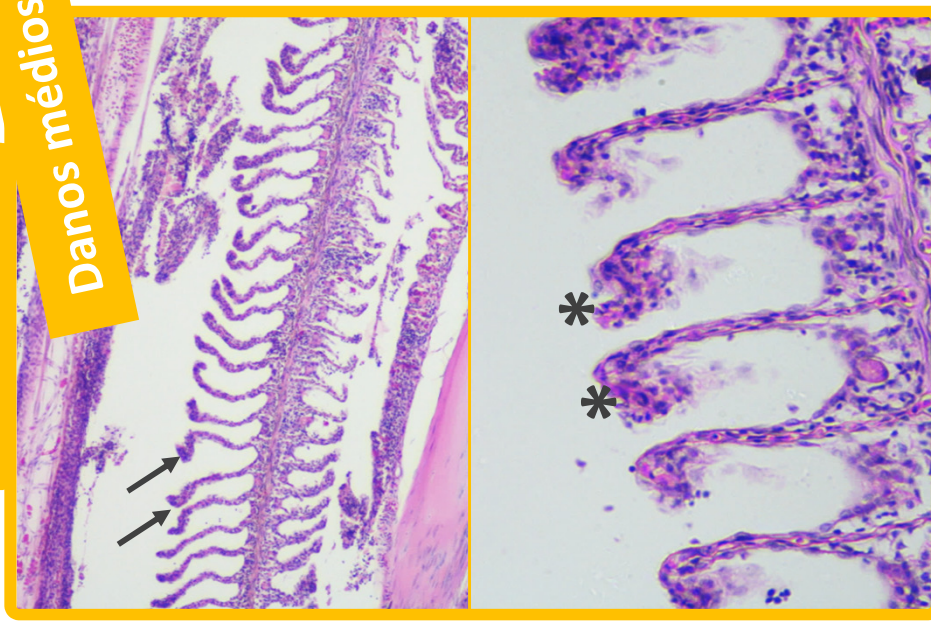
80-100%

sem danos



- ✓ Lamelas primárias (LP) e secundárias (LS) saudáveis.

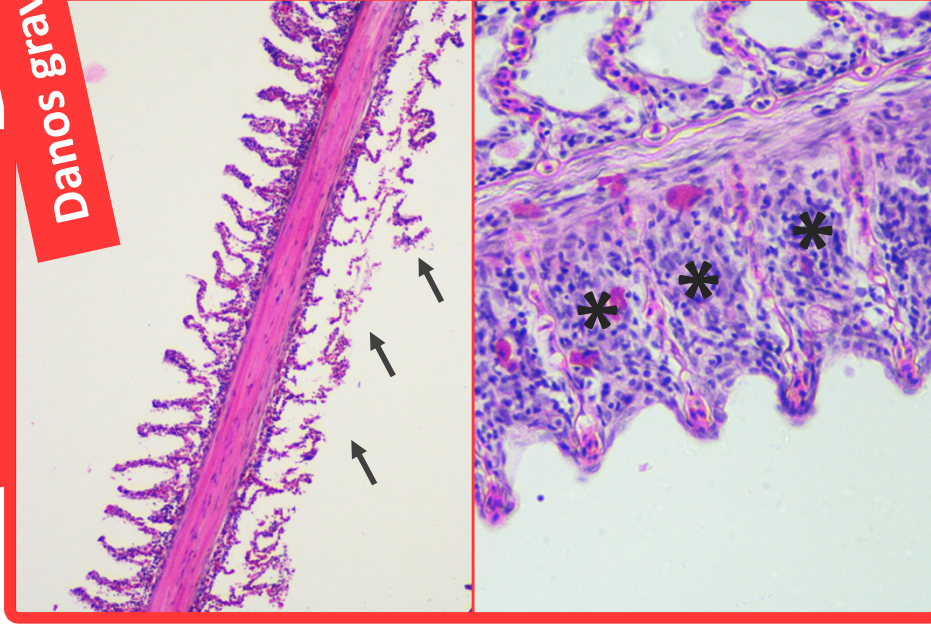
60-80%



- ✓ Edema (seta) e inflamação (*) nas lamelas secundárias.

40-60%

Danos graves



- ✓ Degeneração e necrose da lamela secundária (seta).
- ✓ Hiperplasia lamelar(*)

Received 12 January 2018 | Revised 20 July 2018 | Accepted 2 September 2018

DOI: 10.1111/jir.12181

ORIGINAL ARTICLE

The impact of different rearing condition on gilthead seabream welfare: Dissolved oxygen levels and stocking densities

Rui Araújo-Luna^{1*} | Laura Ribeiro² | Aislém Berghem³ | Pedro Pousão-Ferreira⁴

WILEY

Journal Pre-proof



UNIÃO EUROPEIA
Fundo Europeu
de Desenvolvimento Regional